

# M/V TIGER SHARK 230 CLASS LIFTBOAT

## SPECIFICATIONS

### Dimensions

Length x Beam x Depth (Overall; w/protrusions)	137.0 ft x 78.0 ft x 14.0 ft [41.8 m x 23.8 m x 4.3 m]
Length x Beam x Depth (Moulded Regulatory)	131.5 ft x 78.5 ft x 14.0 ft [40.1m x 23.9 m x 4.3 m]
Draft (Summer Load-Line to Base-Line)	11.18 ft [3.41 m] (add 1.75 ft [0.53 ft] f/protrusion)
Water Depth Max. (f/0 ft Penetr., 10 ft Air Gap, 3 ft Tidal)	181.5 ft [55.3 m]; Op Man nominal 177 ft; max DWT at 142 ft [43.3 m]
Displacement // Lightship // DWT // Leg + Pad	2,100 LT // 1,332 LT // 768 LT //
Leg Length (incl pad) x Outside Dia // Leg Qty & Type	226.5 ft x 78 inch [69.0 m x 1.9 m] // 3 Buoyant Tubular
Tower Height // Pad Dimensions	12.0 ft [3.7 m] // 32 ft x 16 ft x 2.5 ft [9.8 m x 4.9 m x 0.8 m]
Pad Pressures Preload (est. +30% disp; max bouy)	Varies w/depth & loading; approx. 1/3 of drilling rig

### Machinery

Generators	2 x CAT 3306 @ 170 kW ea; parallel (480v/60hz); E Gen 150 kW
Main Engines // Propulsion	2 x CAT 3508 @ 1,050 bhp ea; tot 2,100 bhp // 2 x stern FPP
Speed Cruising // Max // Thrusters	7 knots // 7.5 knots // Not Necessary
Fuel Consumption Cruising // Idle	70.0 gal/hr [265 L/hr] // 12.9 gal/hr [49 L/Hr]
Crane Port (static; max reeving)	<u>21.6 ST</u> @ 29 ft [19.64 MT @ 8.85 m] w/29 - <u>72 ft</u> [8.85 - 21.96 m] telescopic boom
Crane Starboard (static; max reeving)	<u>150 ST</u> @ 30 ft [136.36 MT @ 9.15 m] w/ <u>120 ft</u> [36.6 m] lattice boom
Jacking System & Speed	Double Rack & Pinion (6/leg); 3 to 6 ft/min [0.9 to 1.8 m/s]; 2,900 psig hyd closed fr/ME PTO; Braden LB1400

### Capacities

Bunks Total	43 in House (crew 7 / catering 5 / charterer 31); subtract for 24-hr crew etc.
Deck Area Total // Open & Clear	5,300 ft2 [493 m2] // 4,059 ft2 [377 m2]
Deck Cargo // Loading	562.1 LT [571.1 MT; 1,259,081 lbs] // 750 lbs/ft2 [3.66 MT/m2]
Fuel Oil Tank	93,005 L [79.98 MT; 24,569 USG]; subtract 5% unfillable & 5% unpumpable
Fresh Water Tank	111,634 L [111.63 MT; 29,491 USG]; subtract 5% unpumpable

### Regulatory

Registry // Class // Code // Route // Keel // Deliver	U.S. // Lloyds // SOLAS // Oceans // 15SEP00 // 28NOV01
Tonnage Gross & Net	1,403 & 420 Regulatory (1,403 & 420 ITC)
Shipyard // Hull # // Ex. Names // Mod. History	Conrad Industries // 692 // Ana // n/a

### Additional Features

V-SAT fr/RigNet: upto 2MB via WiFi & LAN hard-wire; w/VOIP phones  
Welding and Cutting Gear  
Moon Pool  
Steel Cabin

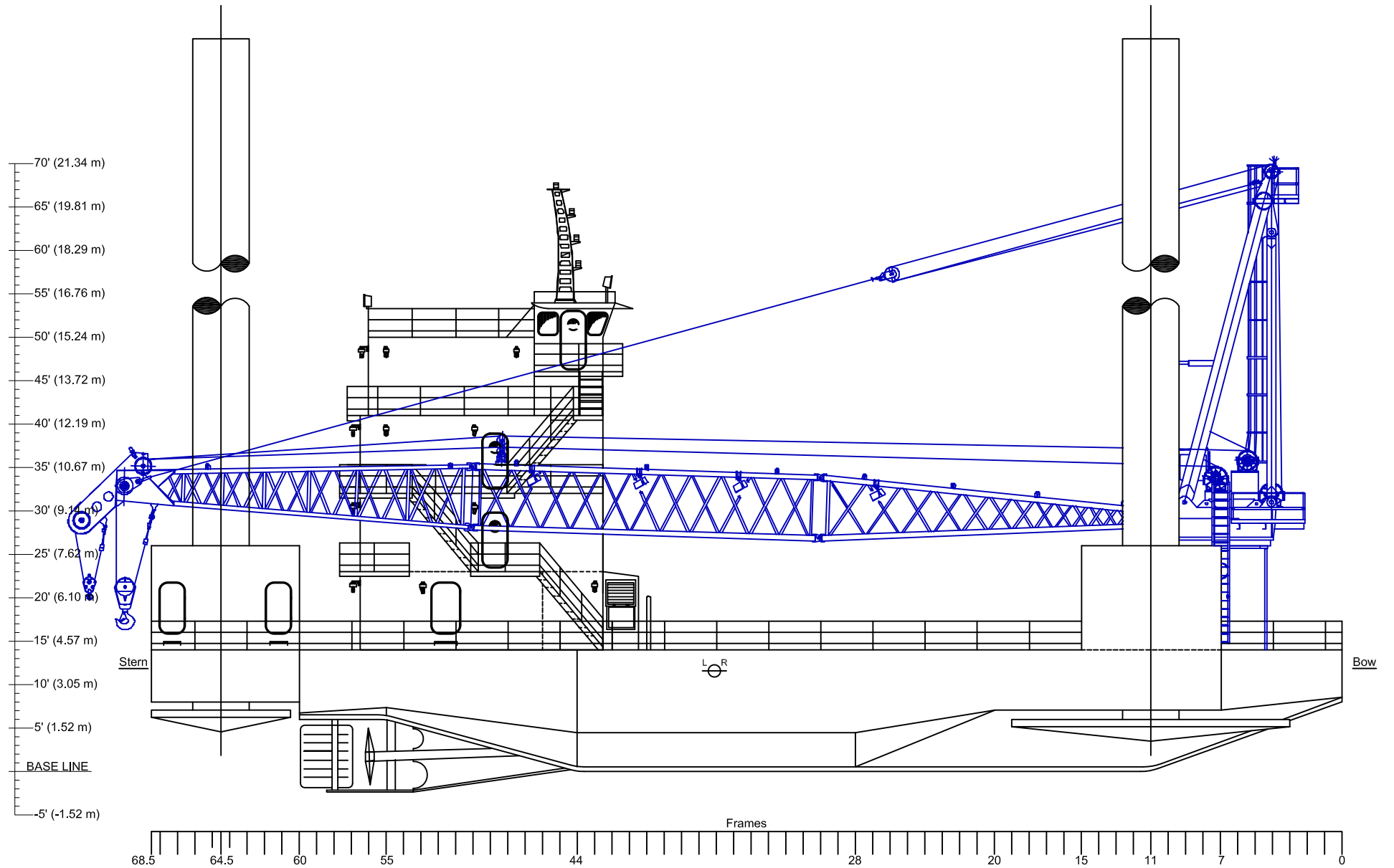
### Safety Features

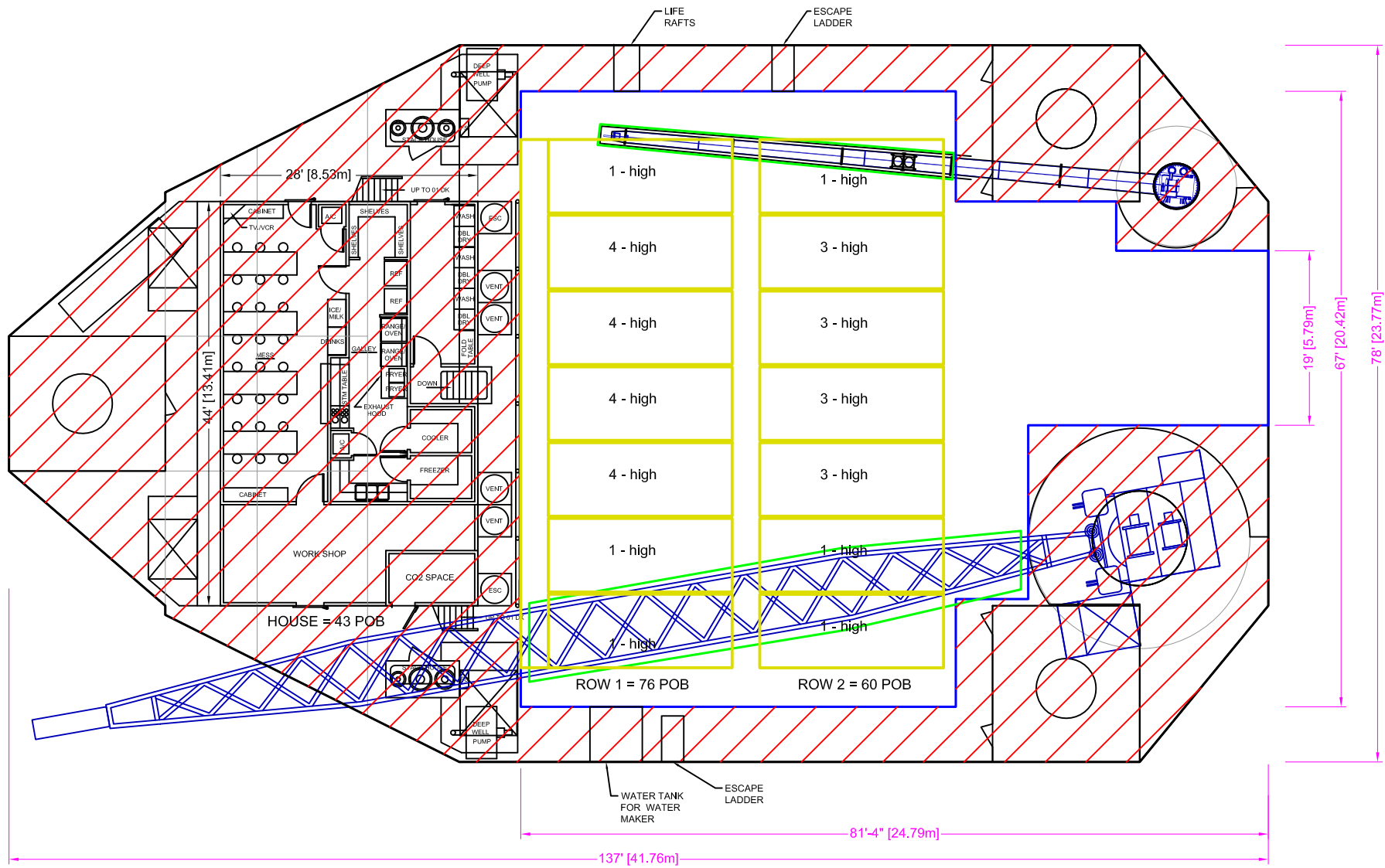
Oil spill containment kit, containment areas, and oily water separator  
Medical Locker & STCW certified first-air providers with stokes litter f/helo evac  
Split engine room for redundancy in: propulsion, jacking, and electrical generation  
High speed jacking for improved safety during close-in platform positioning  
Mechanically driven: props, jacking, & auxiliaries - for enhanced reliability  
Fail-safe jacking system with hydraulic-mechanical interlocks  
ISM compliant system (Permit to Work, LOTO, etc...)



# M/V TIGER SHARK 230 CLASS LIFTBOAT

## OUTBOARD PROFILE





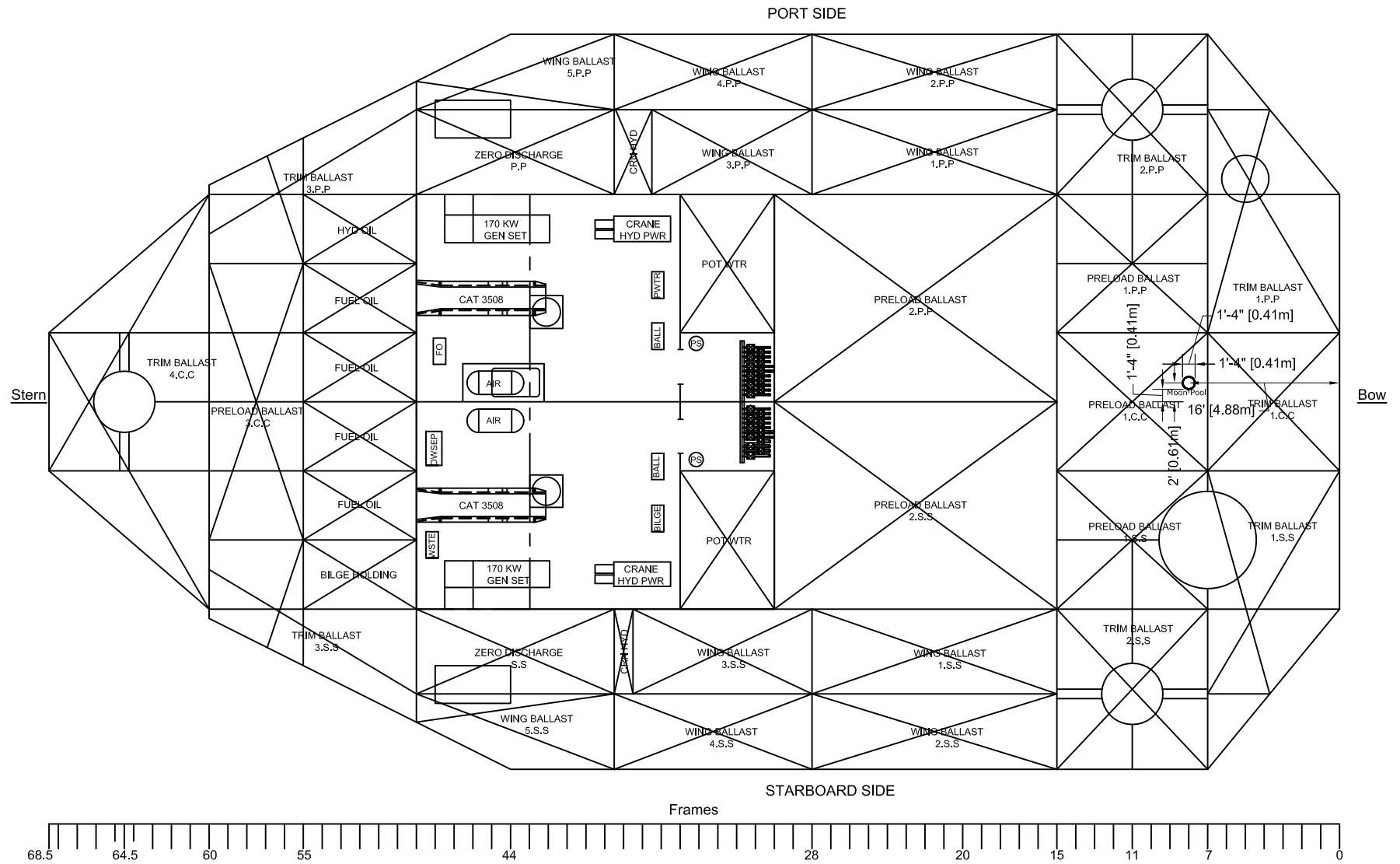
COLOR	DESCRIPTION	AREA m <sup>2</sup>	AREA ft <sup>2</sup>
—	Total	492	5,300
—	Open & Clear	377	4,059
—	Overhead Obstruction	-50	-534
—	Portable Accom w/Stairway (Row 1)	-96	-1,031
—	Portable Accom w/Stairway (Row 2)	-96	-1,031
—	Excluded	n/a	n/a

MAIN DECK

	Vessels/Job:	TIGER SHARK		
	Dwg. Title:	MAIN DECK AREA		
Drawn By:	I. Peter	Dwg. No.:	----	Sheet 1 of 1
Approved:	W. Corbett	Date:	28NOV15	Rev. D3

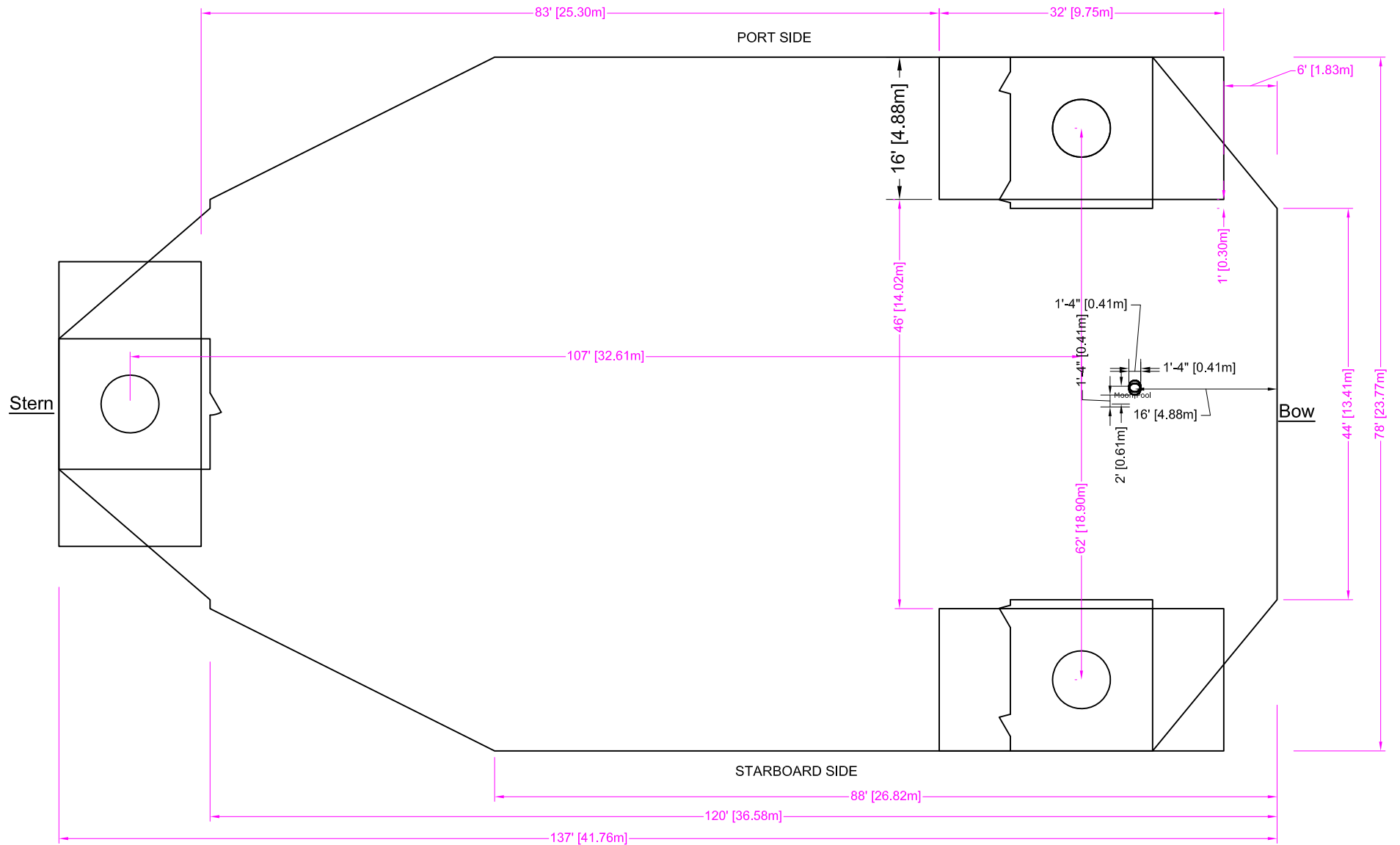
# M/V TIGER SHARK 230 CLASS LIFTBOAT

## TANK PLAN



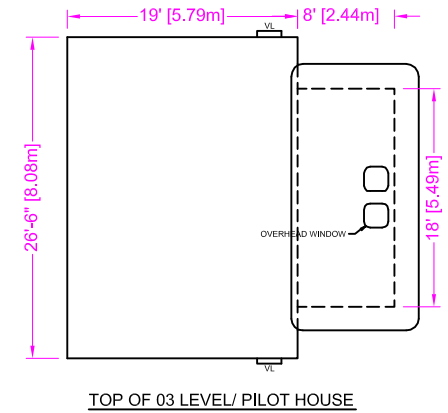
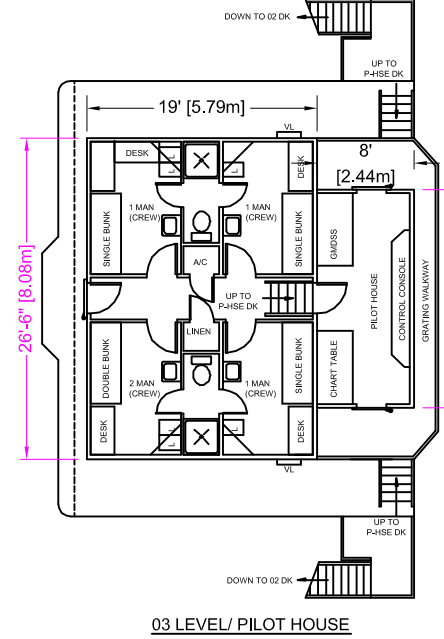
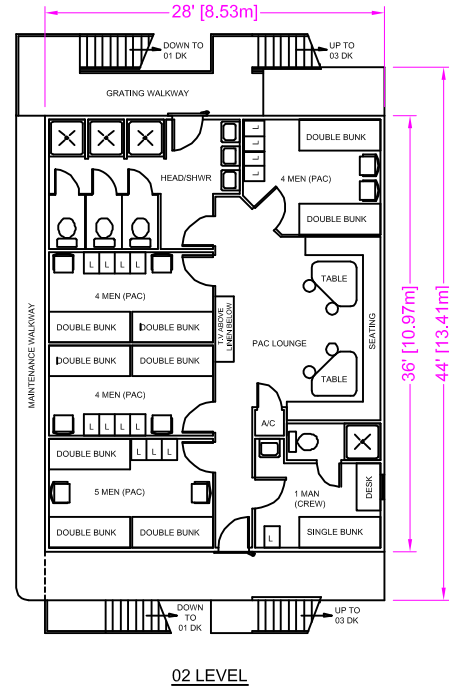
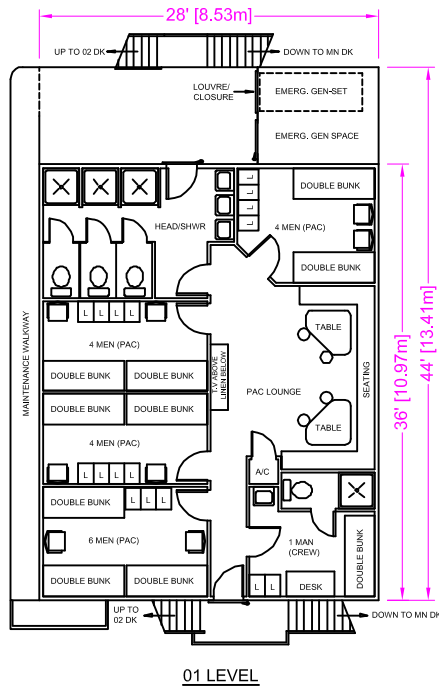
# M/V TIGER SHARK 230 CLASS LIFTBOAT

## FOOTPRINT



# M/V TIGER SHARK 230 CLASS LIFTBOAT

## ACCOMMODATIONS



# M/V TIGER SHARK 230 CLASS LIFTBOAT

## CRANE - PORT

STATIC AND DYNAMIC LOAD CAPACITY CHART  
NAUTILUS MARINE CRANE MODEL 180BT3-72  
MAX SWL 20 SHORT TONS

### RETRACTED BOOM

BOOM ANGLE (DEG)	RADIUS (FT)	STATIC RATING (LBS)	DYNAMIC RATING (LBS)	PERSONNEL RATING (LBS)
82	5	43,200	28,467	13,733
72	10			
61	15			
49	20			
34	25			
0	29			

### MID SECTION EXTENDED

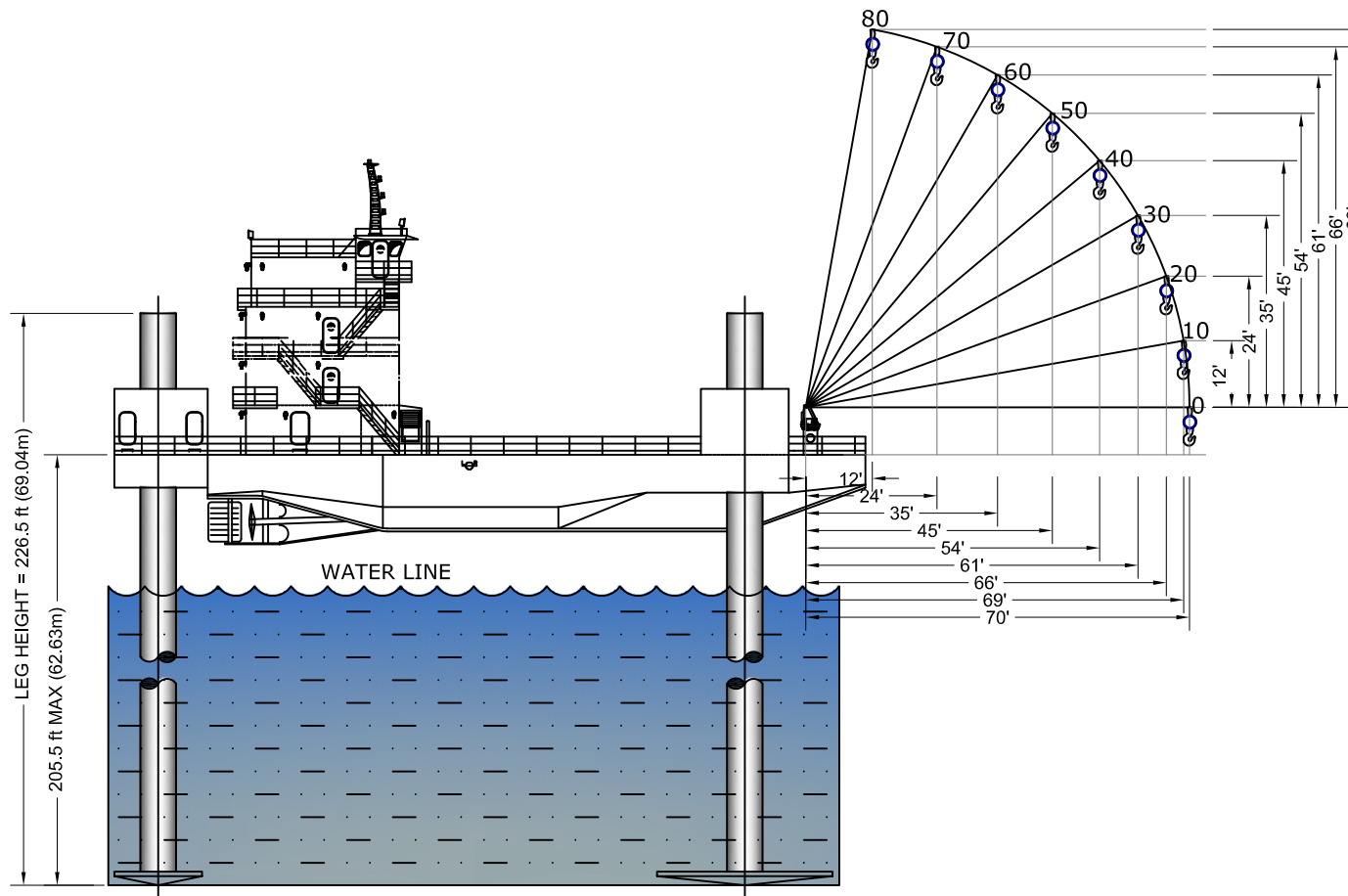
BOOM ANGLE (DEG)	RADIUS (FT)	STATIC RATING (LBS)	DYNAMIC RATING (LBS)	PERSONNEL RATING (LBS)
83	7.19	20,400	13,267	6,133
80	10			
74	15			
68	20			
62	25			
55	30			
48	35			
39	40			
29	45			
12	50			
0	51			

### ALL EXTENDED

BOOM ANGLE (DEG)	RADIUS (FT)	STATIC RATING (LBS)	DYNAMIC RATING (LBS)	PERSONNEL RATING (LBS)
83	9.9	16,100	10,400	4,700
82	10			
79	15			
75	20			
70	25			
66	30			
62	35			
57	40			
52	45			
47	50			
41	55			
35	60	14,616	9,107	4,054
27	65	12,826	8,217	3,609
15	70	11,683	7,455	3,228
0	72	11,247	7,165	3,082

### AUXILIARY CAPACITY

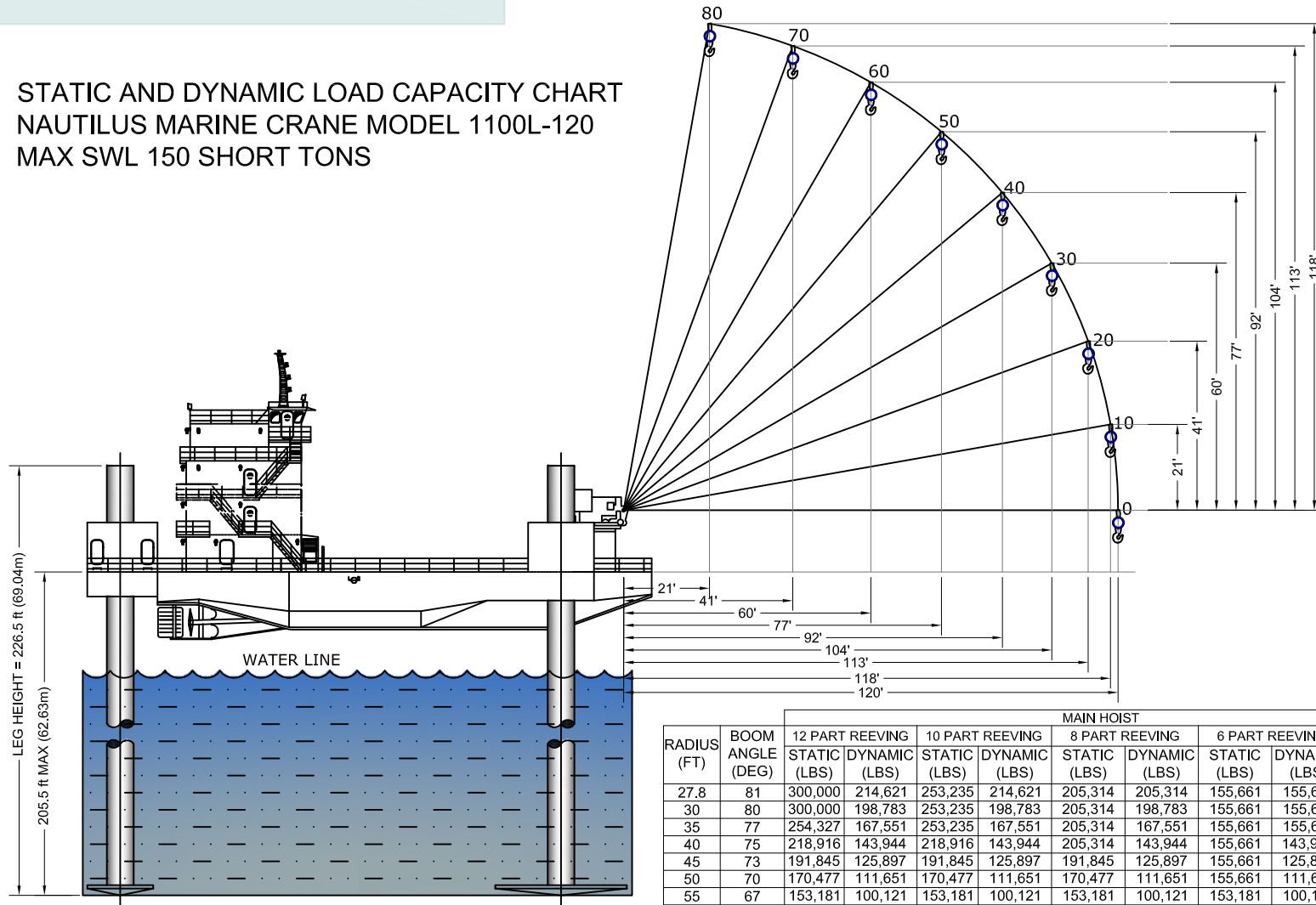
BOOM ANGLE (DEG)	RADIUS (FT)	STATIC RATING (LBS)	DYNAMIC RATING (LBS)	PERSONNEL RATING (LBS)
ALL	ALL	11,462	7,165	3,082



# M/V TIGER SHARK 230 CLASS LIFTBOAT

## CRANE - STARBOARD

STATIC AND DYNAMIC LOAD CAPACITY CHART  
NAUTILUS MARINE CRANE MODEL 1100L-120  
MAX SWL 150 SHORT TONS



RADIUS (FT)	BOOM ANGLE (DEG)	MAIN HOIST										AUXILIARY HOIST		
		12 PART REEVING		10 PART REEVING		8 PART REEVING		6 PART REEVING		4 PART REEVING		2 PART REEVING		
		STATIC (LBS)	DYNAMIC (LBS)	STATIC (LBS)	DYNAMIC (LBS)	STATIC (LBS)	DYNAMIC (LBS)	STATIC (LBS)	DYNAMIC (LBS)	STATIC (LBS)	DYNAMIC (LBS)	STATIC (LBS)	DYNAMIC (LBS)	PERSONNEL (LBS)
27.8	81	300,000	214,621	253,235	214,621	205,314	205,314	155,661	155,661	103,987	103,987			
30	80	300,000	198,783	253,235	198,783	205,314	198,783	155,661	155,661	103,987	103,987			
35	77	254,327	167,551	253,235	167,551	205,314	167,551	155,661	155,661	103,987	103,987			
40	75	218,916	143,944	218,916	143,944	205,314	143,944	155,661	143,944	103,987	103,987			
45	73	191,845	125,897	191,845	125,897	191,845	125,897	155,661	125,897	103,987	103,987			
50	70	170,477	111,651	170,477	111,651	170,477	111,651	155,661	111,651	103,987	103,987			
55	67	153,181	100,121	153,181	100,121	153,181	100,121	153,181	100,121	103,987	100,121			
60	65	138,895	90,597	138,895	90,597	138,895	90,597	138,895	90,597	103,987	90,597			
65	62	126,895	82,597	126,895	82,597	126,895	82,597	126,895	82,597	103,987	82,597			
70	59	116,673	75,782	116,673	75,782	116,673	75,782	116,673	75,782	103,987	75,782			
75	56	107,860	69,907	107,860	69,907	107,860	69,907	107,860	69,907	103,987	69,907			
80	53	100,184	64,789	100,184	64,789	100,184	64,789	100,184	64,789	100,184	64,789	20,000	13,333	6,048
85	50	93,438	60,292	93,438	60,292	93,438	60,292	93,438	60,292	93,438	60,292			
90	47	87,462	56,308	87,462	56,308	87,462	56,308	87,462	56,308	87,462	56,308			
95	44	82,131	52,754	82,131	52,754	82,131	52,754	82,131	52,754	82,131	52,754			
100	40	77,345	49,563	77,345	49,563	77,345	49,563	77,345	49,563	77,345	49,563			
105	36	73,026	45,684	73,026	45,684	73,026	45,684	73,026	45,684	73,026	45,684			
110	32	69,106	44,071	69,106	44,071	69,106	44,071	69,106	44,071	69,106	44,071			
115	27	65,533	41,689	65,533	41,689	65,533	41,689	65,533	41,689	65,533	41,689			
120	20	61,991	39,327	61,991	39,327	61,991	39,327	61,991	39,327	61,991	39,327			
125	11	58,497	36,998	58,497	36,998	58,497	36,998	58,497	36,998	58,497	36,998			
126.7	0	52,651	33,101	52,651	33,101	52,651	33,101	52,651	33,101	52,651	33,101			